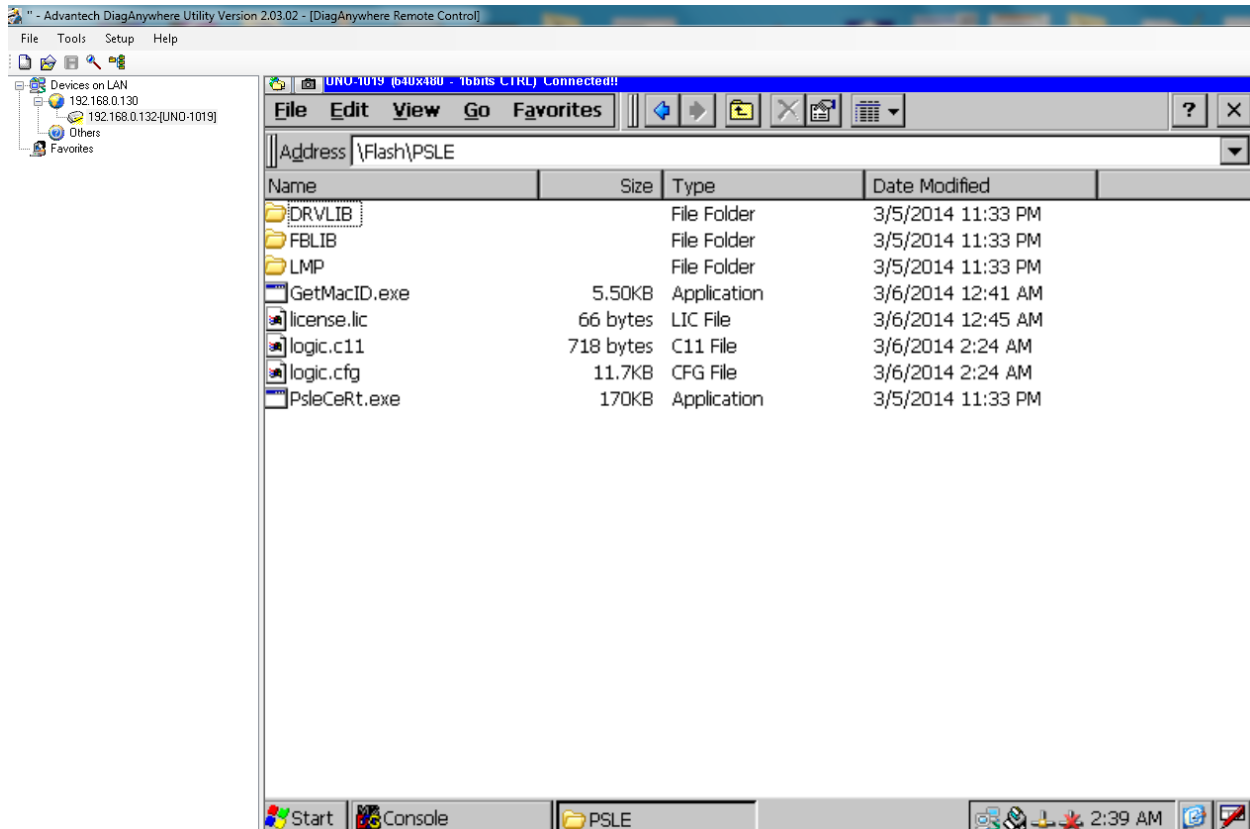


Installation of pbsSoftLogic runtime kernel for UNO-1019:

1 – Download runtime kernel from [www.pbscontrol.com](http://www.pbscontrol.com)

2- Unzip UNO1019.zip file in a local directory.

3 – Copy PSLE directory to UNO-1019 to \flash\ path by Advantech DiagAnywhere or FileZilla FTP Client application.



Drvlib = Directory of Modbus , DNP and IEC870-5 protocols drivers

Fblib = function block and Lua library

Lmp = Logic monitoring protocol. Used internally by pbsSoftlogic for logic monitoring

PsleCeRt.exe = main kernel application

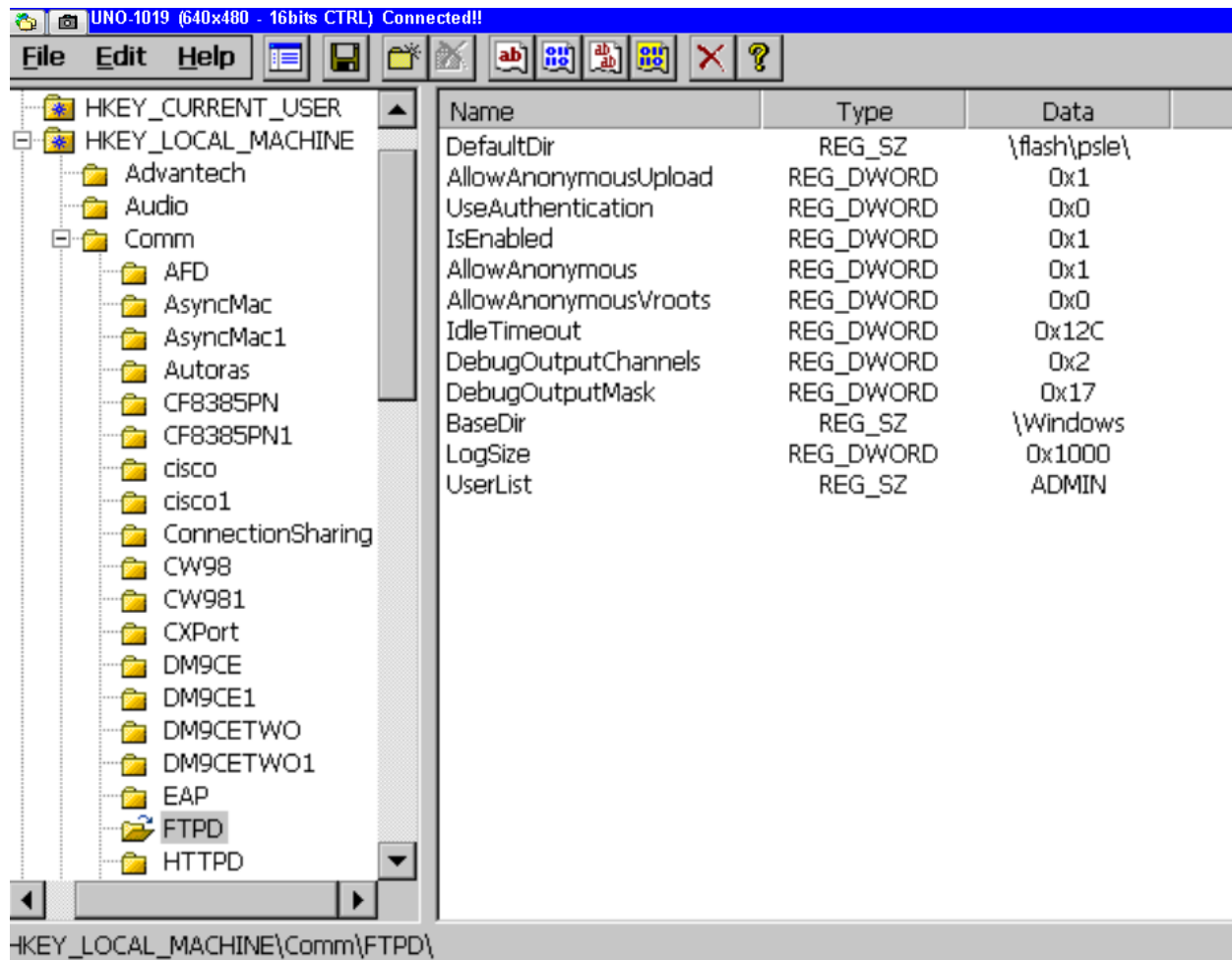
GetMacID.exe = simple utility for reading MAC ID of UNO-1019 for generating license

License.lic = license file. Without license file kernel is working for 30 min .

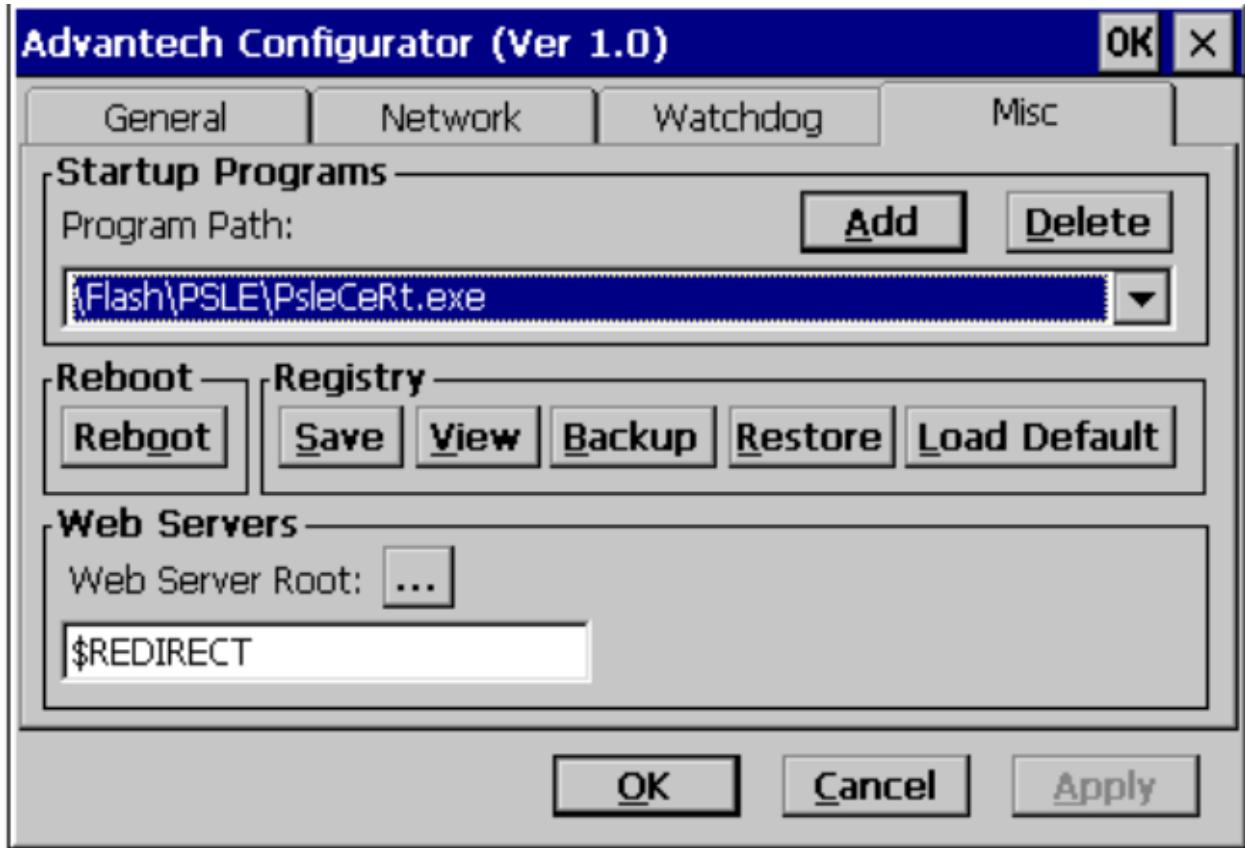
Logic.cfg = configuration file.

Logic.c11 = logic file.

4 – Use Advantech DiagAnywhere Application and Enable FTP Server on UNO-1019 and set default path to /flash/PSLE by Advantech Configurator utility. Run RegEdit and change FTP Parameter as following figure :



5 – Add \flash\PSLE\PslCeRt.exe to startup program by Advantech Configurator utility .



6 – Save registry by Advantech Configurator utility.

7 – Restart UNO-1019 and use pbssoftLogic Engineering V1.6 for configuration and programming of UNO-1019.